

District 10 2018 Outreach



Joseph P. Dubovi, III., P. E.
District Executive

2018 Outreach Agenda

District Profile

Leslie S. Richards, Secretary of Transportation

Construction Projects

Projects in Design

County Maintenance

Innovation & Improvements

Upcoming Programs

Resources

District 10 Profile

Feature	Armstrong	Butler	Clarion	Indiana	Jefferson	Total
Population	66,486	186,847	38,513	86,364	44,073	422,283
-Townships	28	33	22	24	23	130
-Boroughs	16	23	12	14	11	76
-Cities	1	1	0	0	0	2
State Highway (Linear Miles)	664	670	476	813	559	3,182
State Highway (Lane Miles)	1,382	1,496	1,006	1,728	1,173	6,785
Interstate Miles	0	29	28	0	24	81
National Highway System Miles	68	107	45	113	39	372
State Routes ADT >2000	103	230	84	112	83	612
State Routes ADT <2000	492	304	319	588	413	2116
Bridges (over 8' span)	372	355	208	430	265	1630

INTERESTING TO KNOW:

- PA has roughly as many state-maintained miles of highway as New England, New York, & New Jersey combined (40,000).
- PA has the 5th largest roadway system & the 3rd largest number of bridges in the country.

[Back to Agenda](#)

▶ Leslie S. Richards, Secretary of Transportation



TOPICS

[PennDOT Vision](#)

[PennDOT Mission](#)

[County Accreditation](#)

[PennDOT Connects](#)

[Road MaP](#)

[Diversity](#)

PennDOT Vision

*A better quality of
life built on
transportation
excellence.*



PennDOT Mission

To provide a sustainable transportation system and quality services that are embraced by our communities and add value to our customers.

County Accreditation – Best Practices

Safety First

- Truck Skills Rodeo
- Safety Stand Down Days
- Training Videos
- School Awareness



County Accreditation – Best Practices

Safety First

- Safety Innovation Presentations
- Rolling Roadblock Sign Setting
- Cone Setting Platform
- Seal Coat Signing Pilot
- Flashing Yellow Arrow



Cone Setting Insert



I-80 Rolling Roadblock



Flashing Yellow Arrow

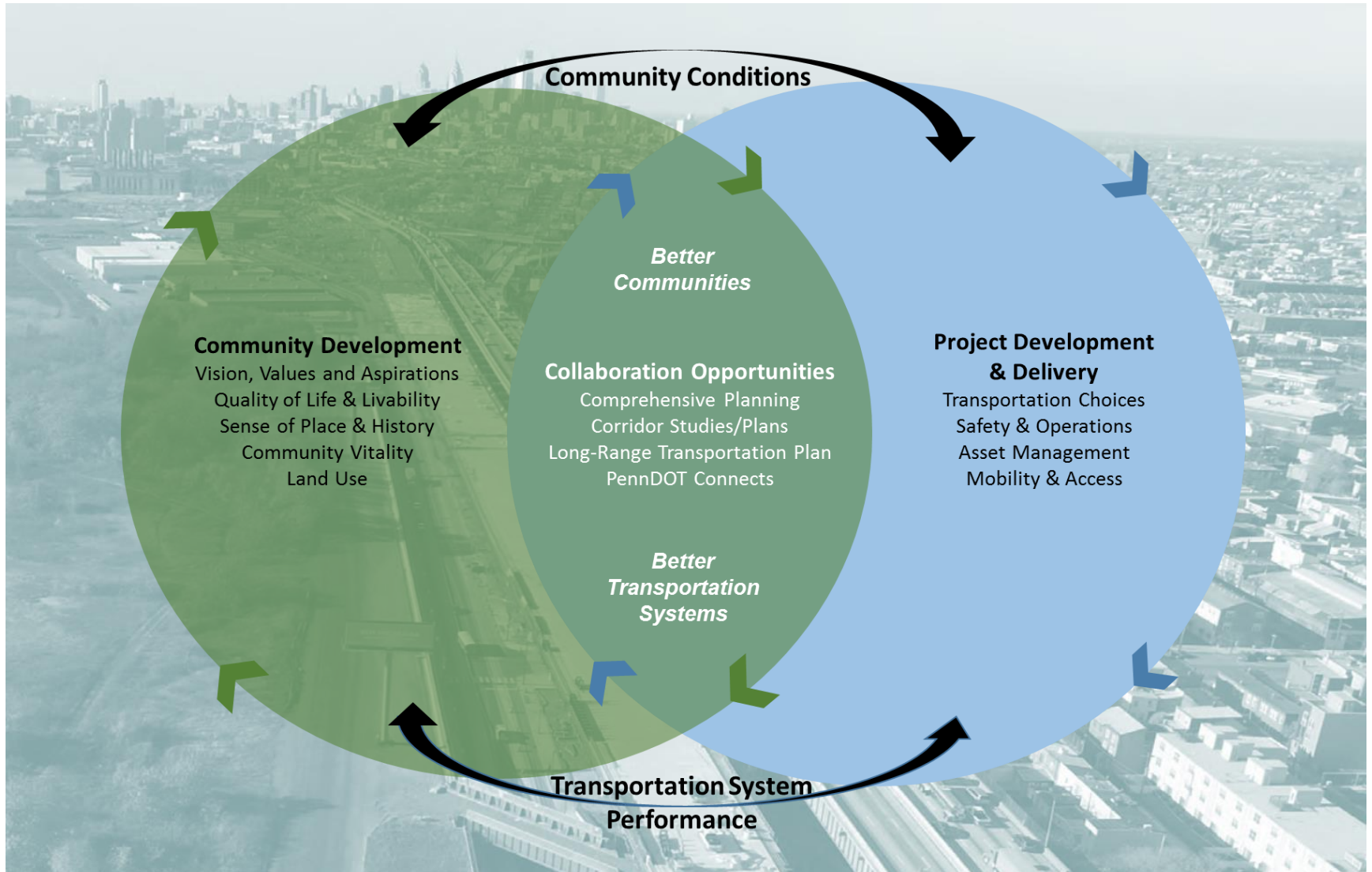
County Accreditation – Best Practices

Asset Management

- Asset: People
 - Forming effective partnerships
 - Recruitment, training, retention
- Asset: Roads
 - [Sectional Cycle Maintenance](#)
 - 5-year Paving Plans
- Asset: Bridges
 - Maintenance & preservation
 - Rehabilitation or replacement of structurally-deficient (SD) bridges
- Asset: Equipment & Materials
 - Equipment sharing between Counties and other Districts
 - Efficient procurement & use of winter supplies

Structurally Deficient Bridges		
	2008	2018
Statewide	6,034	3,114
District 10	580	283

PennDOT Connects

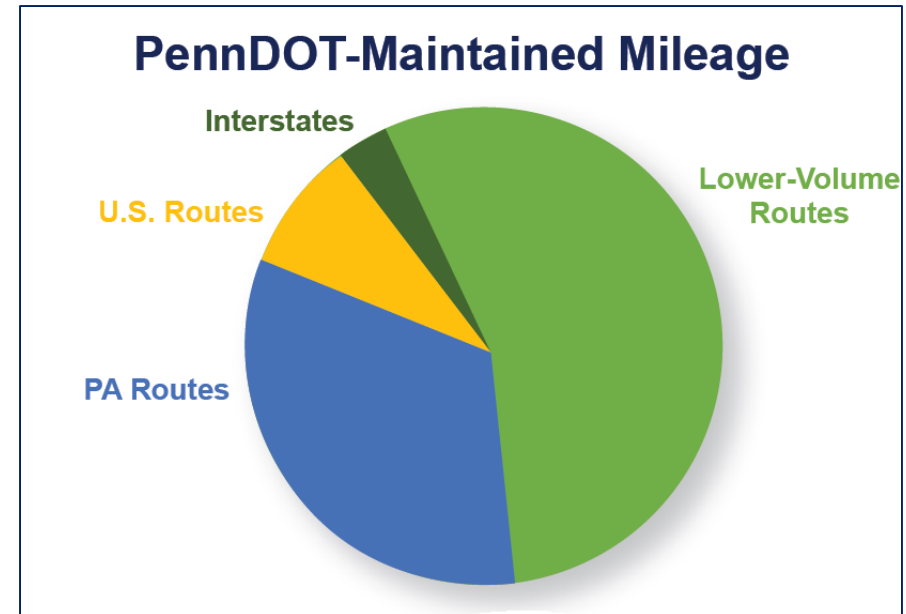


Road MaP

Road Maintenance and Preservation

ROAD MaP - Overview

- Funding & Allocation
 - Act 89
 - Decade of Investment
 - Capital Projects
 - Preservation & Reconstruction
- Innovation
 - RAP
 - Equipment Sharing



Road MaP

Maintenance

- RAP (Recycled Asphalt Paving)
 - Environmentally Conscious
 - Ideal for less-traveled roads
- Department Force vs. Outsourcing
- 18-year Sign Life Management
- Sectional Cycle Maintenance
 - Increased from 4 to 5 years
- Equipment Sharing

Diversity

- **Diversity**

- All-inclusive Workforce
- Stimulates Innovation
- Sparks Creativity
- Strengthens the Organization

- **Recruitment**

- Identifying Target Audiences
- Incorporating Results-Driven Strategies
- Participating in Community Outreach

- **Retention**

- Inclusion Committees
- Training & Organizational Support



CONSTRUCTION

Paul F. Koza, Jr., P.E.

Assistant District Engineer for Construction

724-357-2812

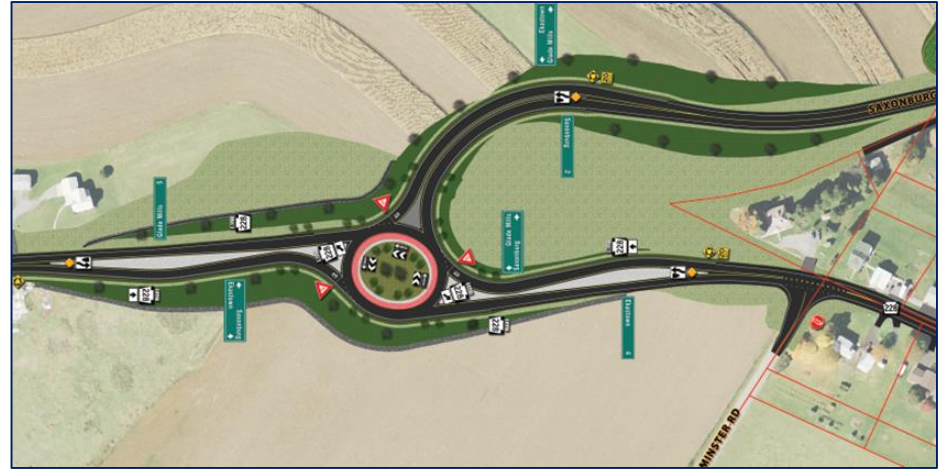


Outreach 2018 – Butler County



Cox's Corner Intersection

- ECMS #90309
- SR 228
- Butler County, Clinton Twp.
- Roundabout Intersection
- A. Liberoni, Inc.
- Cost: \$5,589,249
- Let: 7/26/16
- Summer 2018 Completion



Moraine State Park Access

- ECMS #24523
- SR 422
- Butler County
 - Muddy Creek & Worth Twps.
- Widening/Additional Lanes
- Gulisek Construction LLC
- Cost: \$4,358,886
- Let: 5/4/17
- Fall 2018 Completion



SR 3015 Group Bridges

- ECMS #96687
- SR 3015
- Butler County
 - Forward Twp.
- Bridge Replacement
- Allison Park Contractors, Inc.
- Cost: \$2,599,000
- Let: 5/11/17
- Temporary Signal



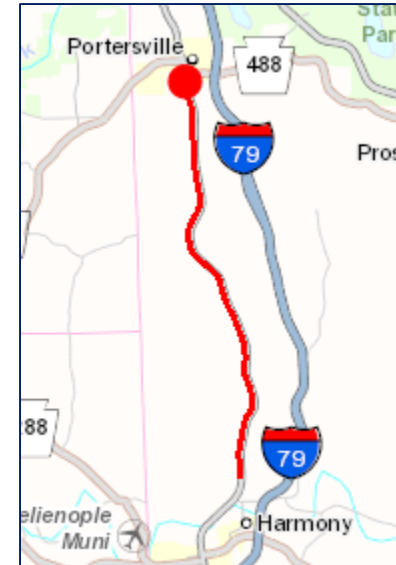
PA38 over Connoquenessing

- ECMS #24730
- SR 38
- Butler County
 - Center Twp.
- Bridge Replacement
- Beech Construction, Inc.
- Cost: \$2,236,093
- Let: 8/24/17
- Temporary Signal



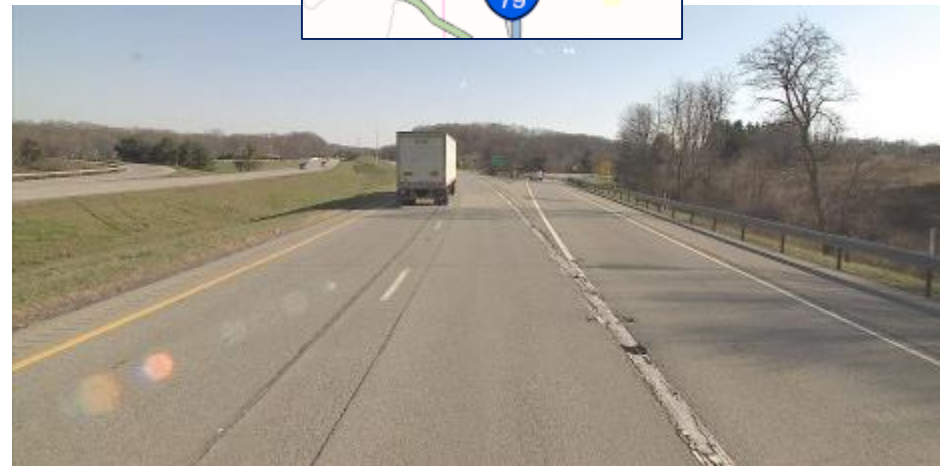
Harmony North PM

- ECMS #102962
- SR 19
- Butler County
 - Lancaster and Muddy Creek Twps.
- Resurfacing / Overlay
- Lindy Paving, Inc.
- Cost: \$3,426,523
- Let: 10/5/17



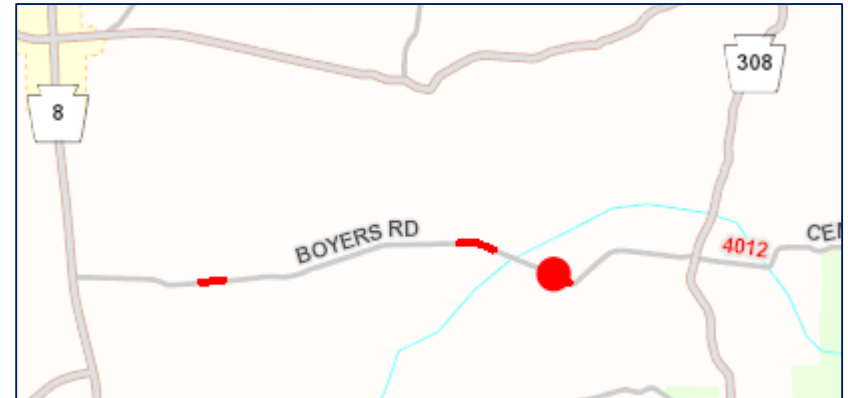
I-79 Middle Section PM

- ECMS #91919
- I-79
- Butler County
 - Lawrence, Jackson, Lancaster, Muddy Creek and Worth Twps.
- Resurfacing / Overlay
- Glenn O. Hawbaker, Inc.
- Cost: \$25,852,254
- Let: 10/19/17
- Night Work
 - 6PM to 6AM



SR 4012 Group Bridges

- ECMS #102618
- SR 4012
- Butler County
 - Marion and Mercer Twps.
- Bridge Replacement
 - over Slippery Rock Creek & North Branch of Slippery Rock Creek
- Clearwater Construction, Inc.
- Cost: \$4,386,000
- Let: 10/19/17
- Detour



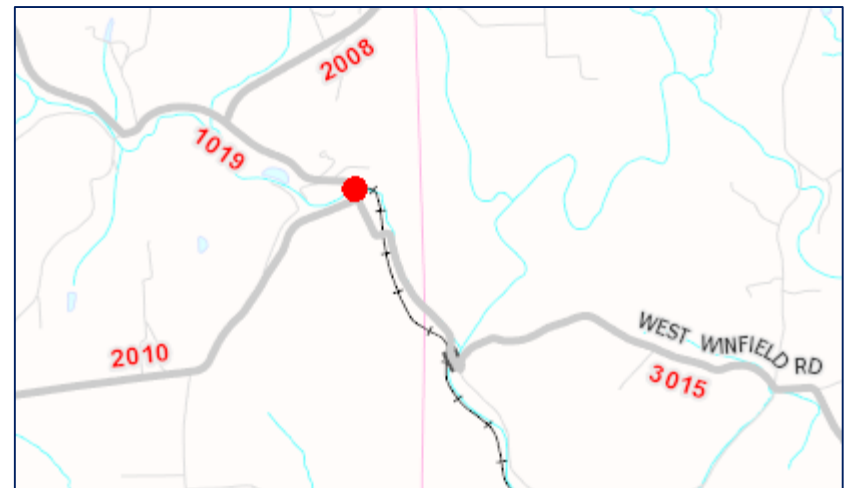
Pittsburgh Street Intersection

- ECMS #91285
- SR 228
- Butler County
 - Adams Twp.
- Relocation / New Construction
- Gulisek Construction LLC
- Cost: \$7,992,930
- Let: 10/19/17
- Spring 2020 Completion



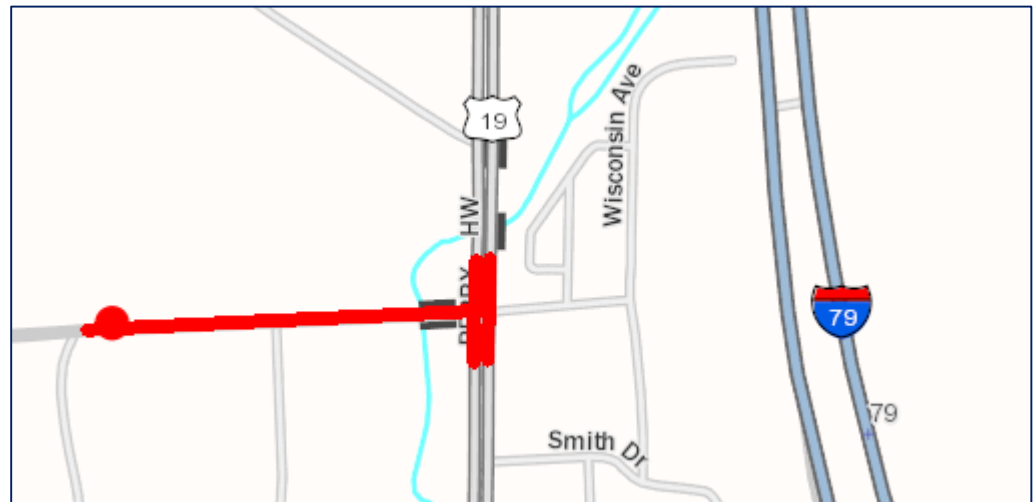
West Winfield Bridge #1

- ECMS #24817
- SR 1019
- Butler County
 - Winfield Twp.
- Bridge Replacement
- Brayman Construction Corp.
- Cost: \$2,517,338
- Let: 10/19/17
- Temporary Signal



US 19/Rochester Road Intersection

- ECMS #102171
- SR 19
- Butler County
 - Cranberry Twp.
- Widening/Additional Lanes
- Michael Facchiano Contracting, Inc.
- Cost: \$1,396,451
- Let: 12/7/17
- Local Project



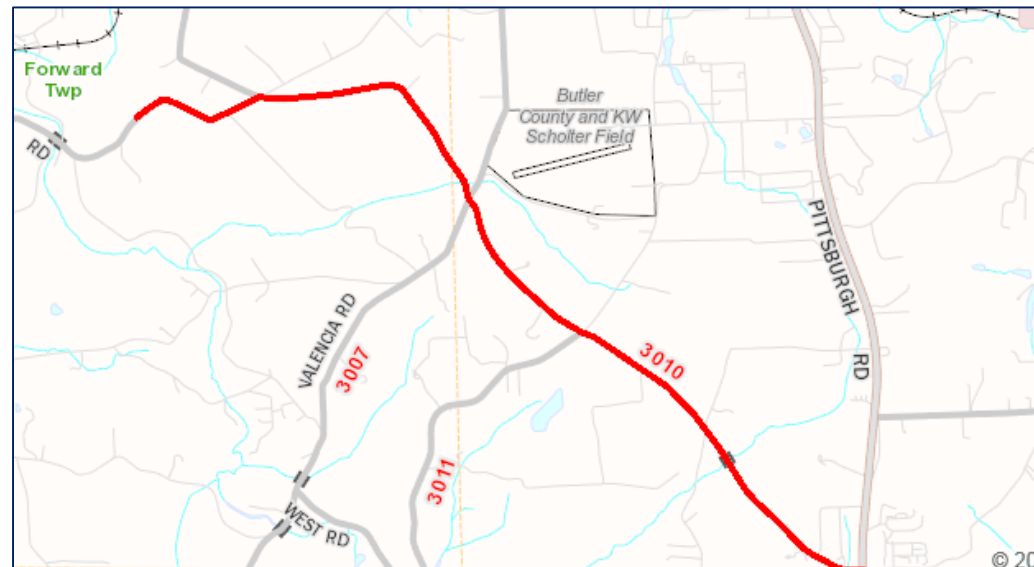
PA38 Trib. of Connoquenessing Creek

- ECMS #83307
- SR 38
- Butler County
 - Concord Twp.
- Bridge Replacement
- J.C. Lee Construction & Supply Co.
- Cost: \$862,652
- Let: 12/21/17
- Temporary Signal



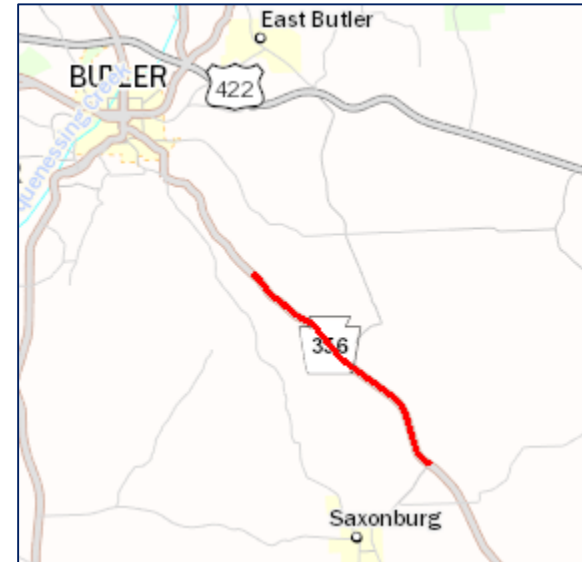
SR 3010 Brownsdale Road Phase 2

- ECMS #96945
- SR 3010
- Butler County
 - Forward Twp.
- Resurfacing / Overlay
- Cost: \$1.0M to \$2.5M
- Let: 3/1/18



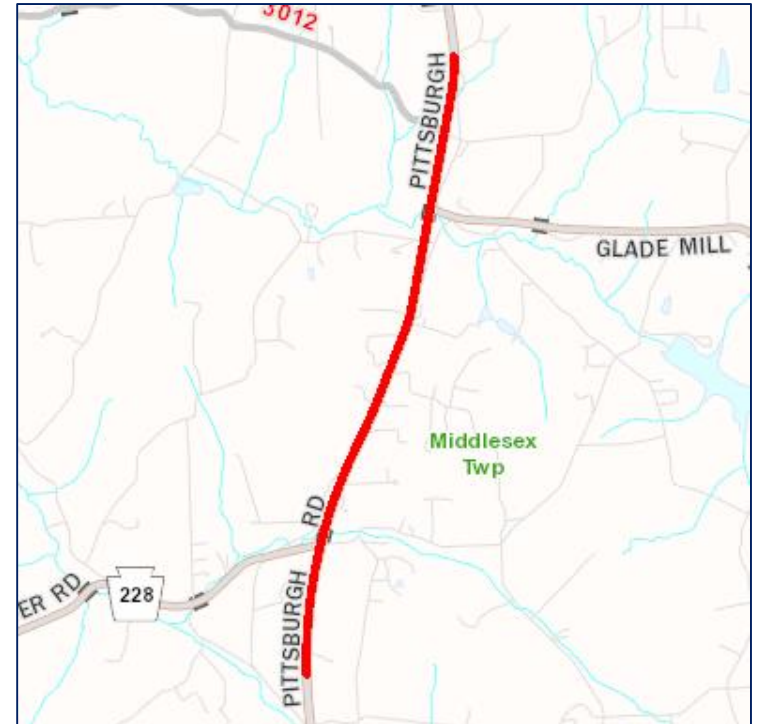
Hannahstown South Resurface

- ECMS #100057
- SR 356
- Butler County
 - Jefferson Twp.
- Resurfacing / Overlay
- Cost: \$2.5M to \$5.0M
- Let: 3/1/18



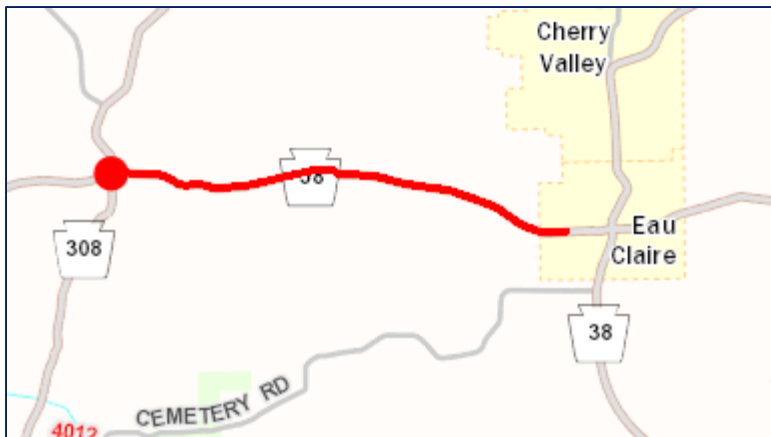
PA 8 North-PA 228 to Old Route 8

- ECMS #100066
- SR 8
- Butler County
 - Middlesex Twp.
- Resurfacing / Overlay
- Cost: \$1.0M to \$2.5M
- Let: 3/29/18



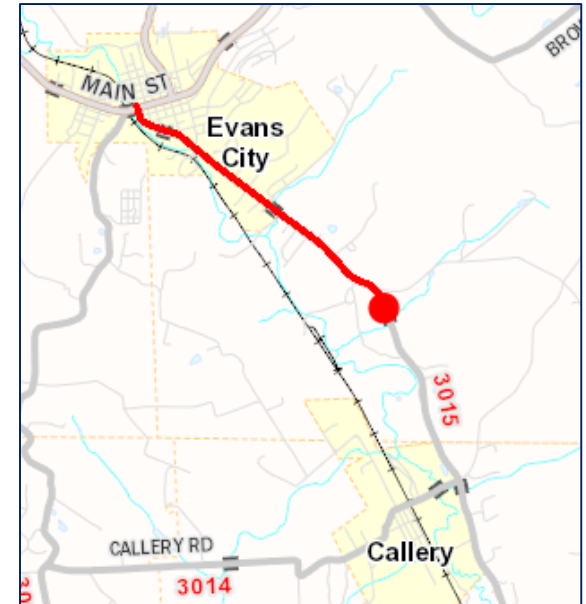
Eau Claire West Resurface

- ECMS #100058
- SR 58
- Butler County
 - Marion & Venango Twps.
- Resurfacing / Overlay
- Cost: \$1.0M to \$2.5M
- Let: 4/26/18



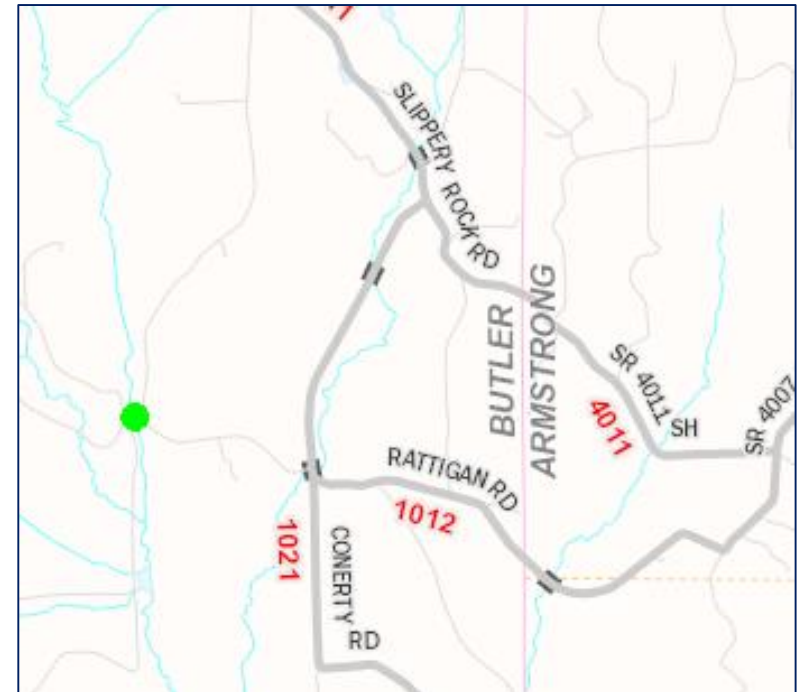
Mars-Evans City Road PM

- ECMS #99575
- SR 3015
- Butler County
 - Forward & Adams Twps.
- Resurfacing / Overlay
- Cost: \$500,000 to \$1.0M
- Let: 6/7/18



T-830 Rattigan Bridge

- ECMS #77973
- T-830
- SR 7213
- Butler County
 - Donegal Twp.
- Bridge Replacement
- Cost: \$1.0M to \$2.5M
- Let: 6/21/18
- Detour



Jackson Twp. Transp. Improvement TIIF

- ECMS #104233
- SR 19
- Butler County
 - Jackson Twp.
- Miscellaneous
- Cost: \$1.0M to \$2.5M
- Let: 6/21/18
- Roundabout
- Local Project



2018 District Wide Contracts

- 2018 RPM: ECMS #110105
 - Cost: \$300,000
 - Let: 4/12/18
- 2018 Small Paint: ECMS #110106
 - Cost: \$300,000
 - Let: 6/7/18
- Guiderail Contracts:
 - Armstrong: ECMS #110870, Cost \$200,000
 - Butler: ECMS #110871, Cost \$250,000
 - Clarion: ECMS #110872, Cost \$225,000
 - Indiana: ECMS #110873, Cost \$250,000
 - Jefferson: ECMS #110874, Cost \$225,000
 - Let: 6/7/18

Plenary Walsh Keystone Partners – P3 Bridges

- Ringneck Bridge SR 1025 Summit Twp.
 - JV 372
 - Detour
- South of Queen Junction SR 4002 Clay Twp.
 - JV 378
 - Detour



<http://parapidbridges.com>

DESIGN

James. R. Andrews, P.E.

Assistant District Engineer for Design

724-357-2805



[Back to Agenda](#)

2018 Butler County Outreach



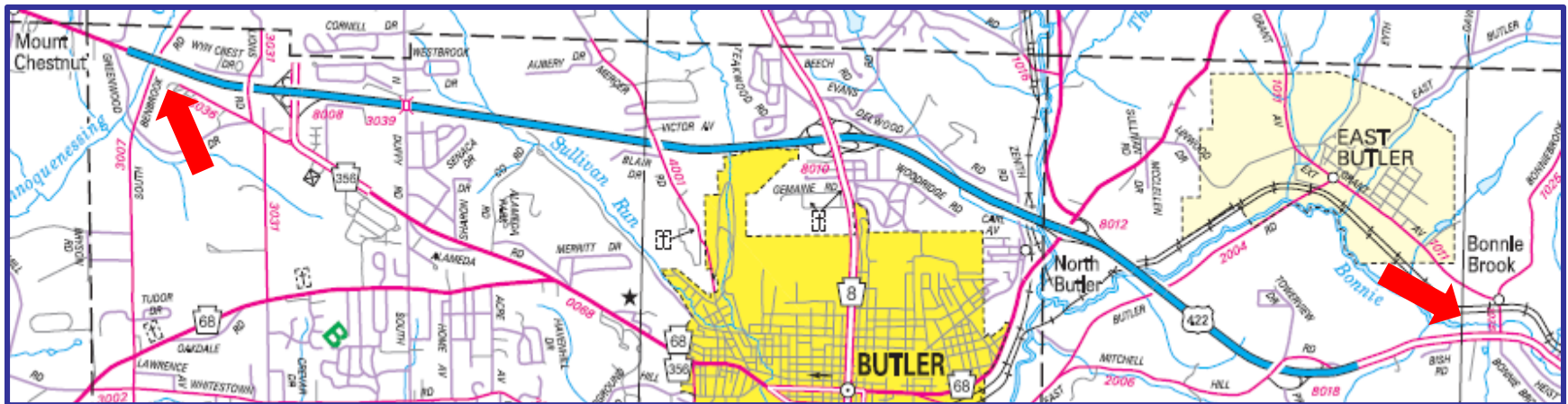
Freedom Road Turnpike Bridge

- Route 3020
- Bridge Replacement
- Cranberry Twp.
- Over I-76 (PA Turnpike)
- Maintain Three Lanes
- Construction in 2019
- Estimate: \$10M - \$15M



Butler Bypass

- Route 422 - Concrete Patching and Resurfacing
- Butler, Summit, Connoquenessing and Franklin Twps.
- Construction in 2019
- Estimate: \$10M - \$13M



Slippery Rock Intersection

- Route 108
- Improvements at SR 108/173/258 Intersection
- Slippery Rock Borough
- Construction in 2020
- Estimate: \$100,000 - \$500,000



PA 268 over Lowrey Run

- Route 268
- Bridge Replacement
- Allegheny Twp.
- Over Lowrey Run
- Phased Construction
- Construction in 2020
- Estimate: \$1M - \$2.5M



3 Degree Road Intersection

- Route 228
- Safety Improvements, Turning lanes, Roadway Realignment & Intersection Improvements
- Adams Twp.
- Construction in 2020 & 2021
- Estimate: \$25M to \$30M



I-79 NB & SB Bridges over Boundary Road

- Interstate 79
- NB & SB Bridge Replacements
- Cranberry Twp.
- Construction in 2020
- Estimate: \$10M - \$15M



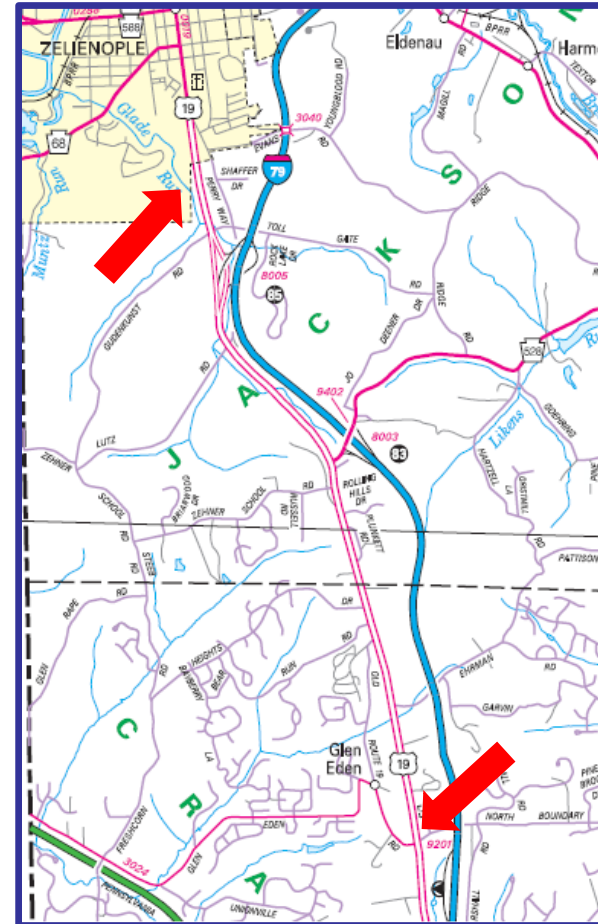
PA 68 over Buffalo Creek

- Route 68
- Bridge Replacement
- Chicora Borough
- Over Buffalo Creek
- Temporary 2 lane bridge during construction
- Construction in 2020
- Estimate: \$2.5M - \$5M



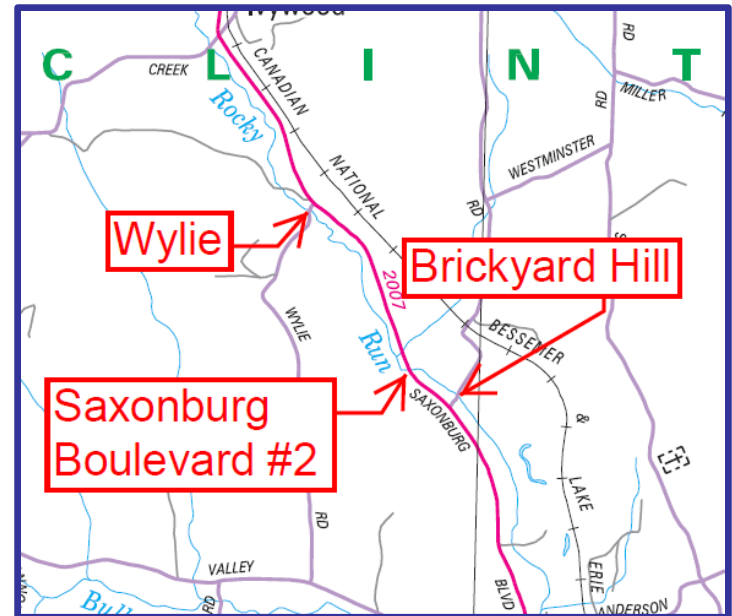
Cranberry North Resurfacing

- Route 19
- Resurfacing
- Zelienople Borough, Cranberry and Jackson Twps.
- Construction in 2021
- Estimate: \$5M - \$7.5M



Butler Group Project (State/Local)

- State Route 2007
(Saxonburg Boulevard #2)
- Routes T-573 (Wylie) &
T-554 (Brickyard Hill)
- Bridge Replacements
- Clinton Twp.
- Over Rocky Run
- Construction in 2021
- Estimate: \$1M - \$1.5M



Cooperstown Group Bridges

- SR 8
- Bridge Replacements
- Middlesex Township
- Phased Construction
- Construction in 2021
- Estimates:
 - #1: \$1.5M - \$2.5M
 - #2: \$1M - \$2M
 - #3: \$1M - \$2M



#1



#2

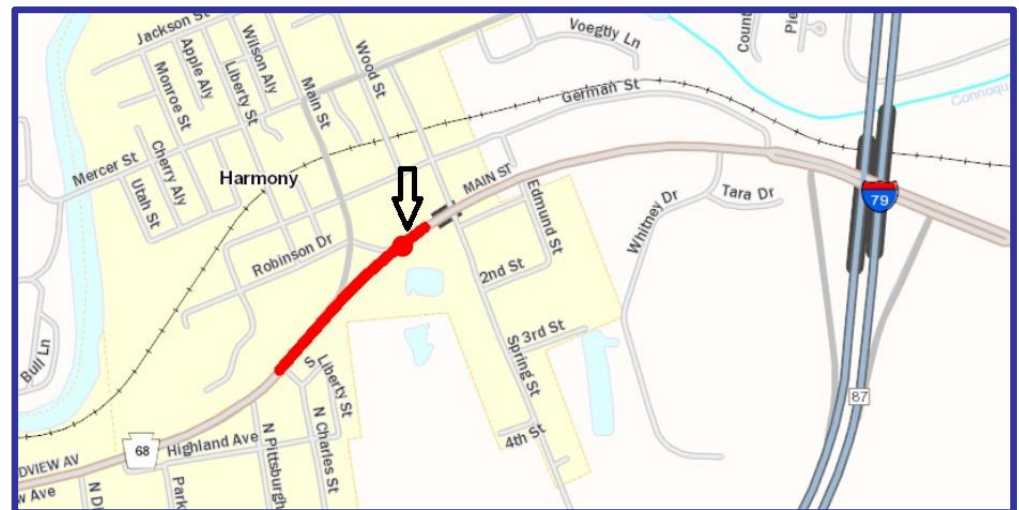


#3



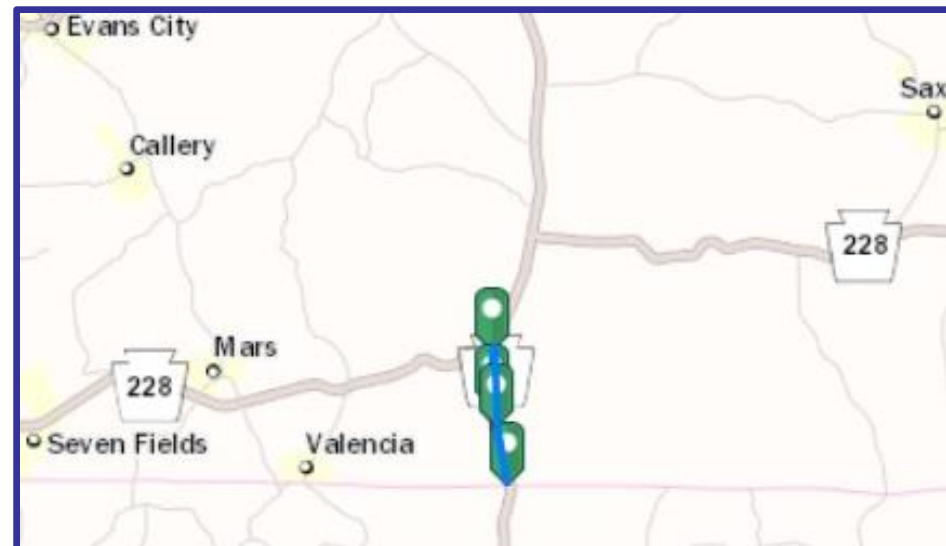
Harmony Slide

- Route 0068 Seg 0060
- Roadway Slide Repair
- Harmony Borough
- Construction in 2021
- Estimate: \$100,000 - \$500,000



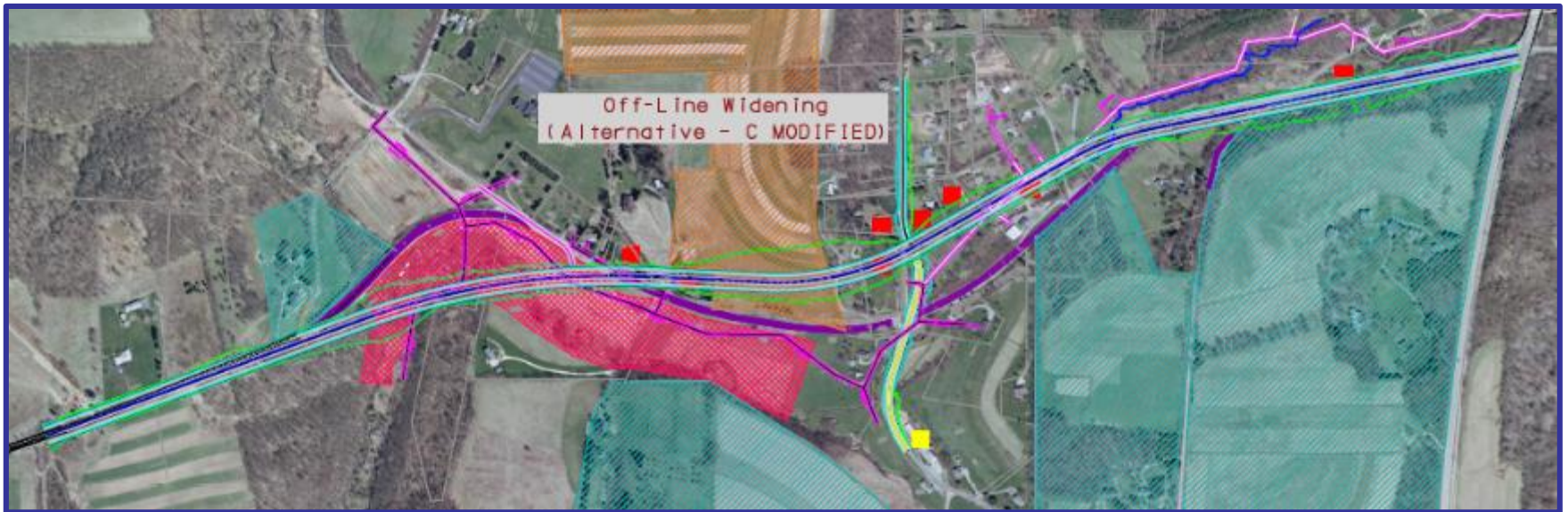
Route 8 Resurfacing

- Route 0008 Seg 0010-0040
- Resurfacing & Minor Upgrades from Allegheny County Line to SR 228
- Construction in 2022
- Estimate: \$1M- \$5M



Balls Bend

- Route 228 - Highway Realignment
- Adams & Middlesex Twps.
- Construction in 2022
- Construction Estimate: \$20M - \$25M



PA 356 over Trib to Coal Run

- SR 356 Hinchberger Road Bridge
- Bridge Replacement
- Summit Twp.
- Over Tributary to Coal Run
- Construction in 2022
- Construction Estimate:
\$1M - \$2.5M



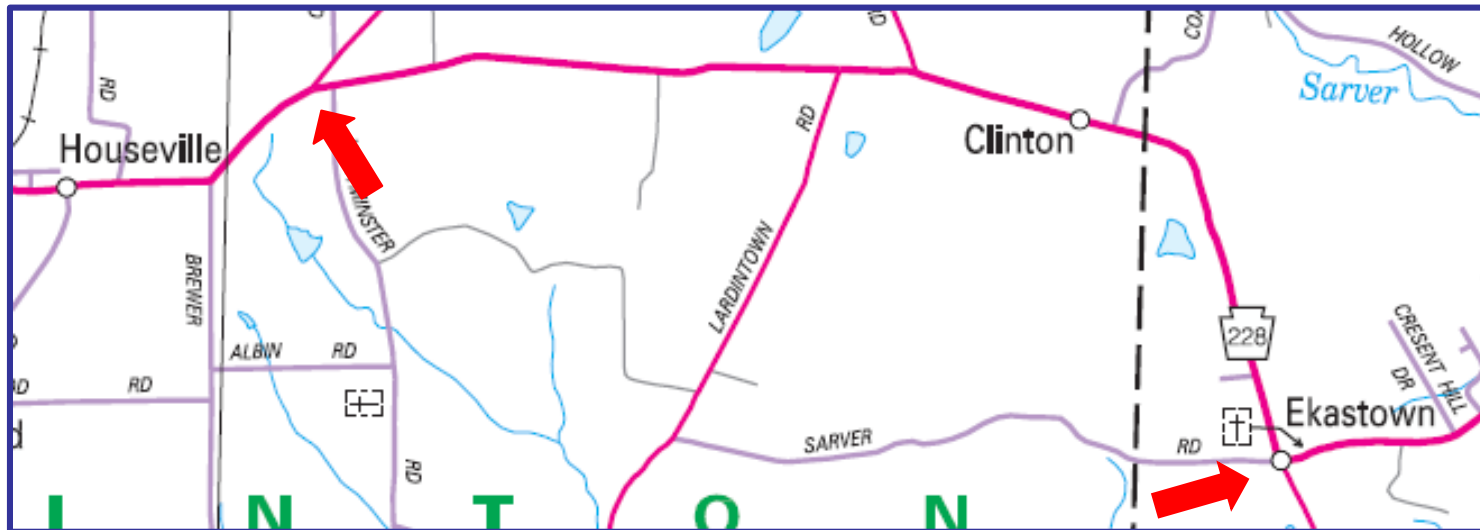
Harrisville Bridge #1

- SR 8
- Bridge Replacement
- Mercer Twp.
- Over McMurray Run
- Construction in 2022
- Estimate: \$1M - \$2.5M



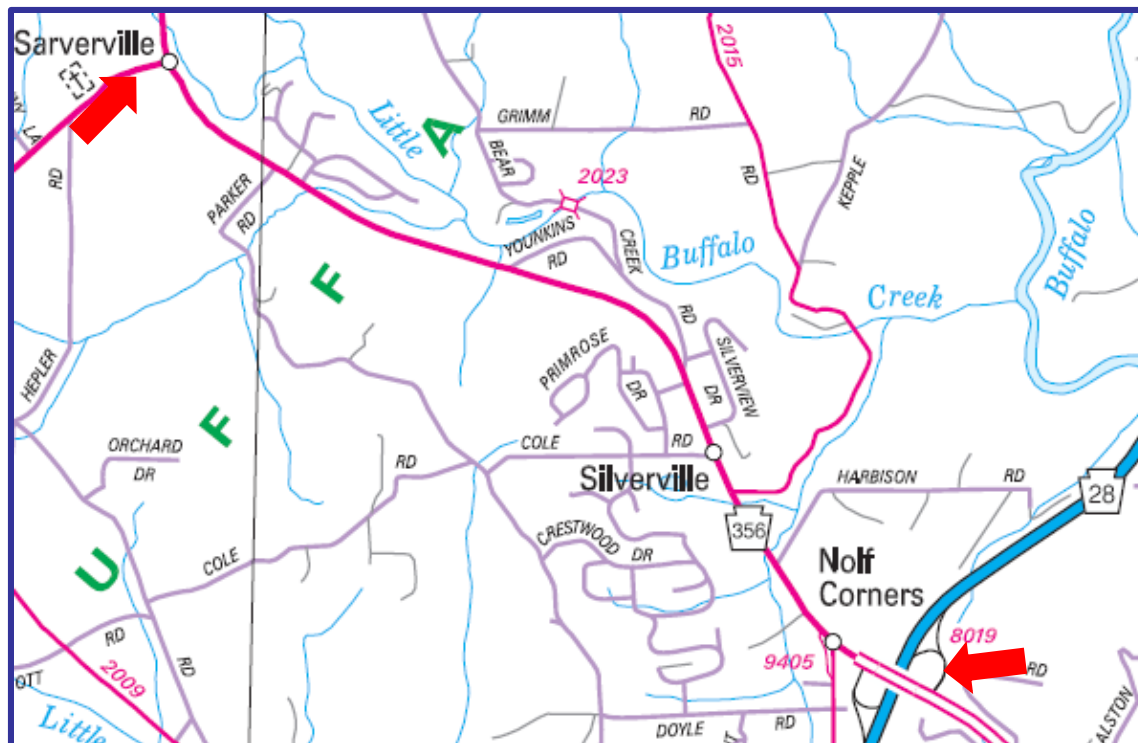
Ekastown West 3R

- Route 228 - Highway Rehabilitation
- Buffalo and Clinton Twps.
- Construction 2022
- Estimate: \$5M - \$7.5M



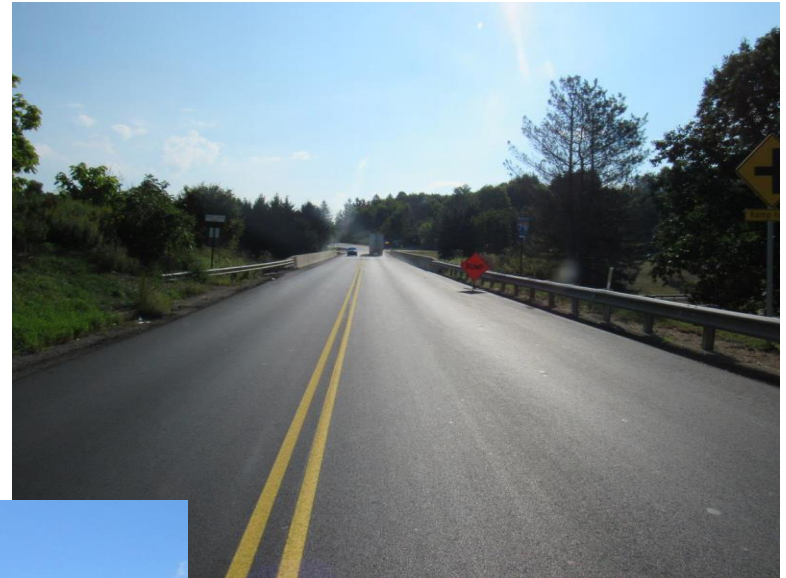
PA 356 Corridor Improvements

- Route 356 -Corridor Improvements
- Buffalo Twp.
- Construction Not Funded
- Estimate: \$10M - \$15M



Portersville Bridge

- SR 488
- Bridge Replacement
- Muddy Creek Twp.
- Over I-79
- Construction not funded
- Estimate: \$5M - \$10M



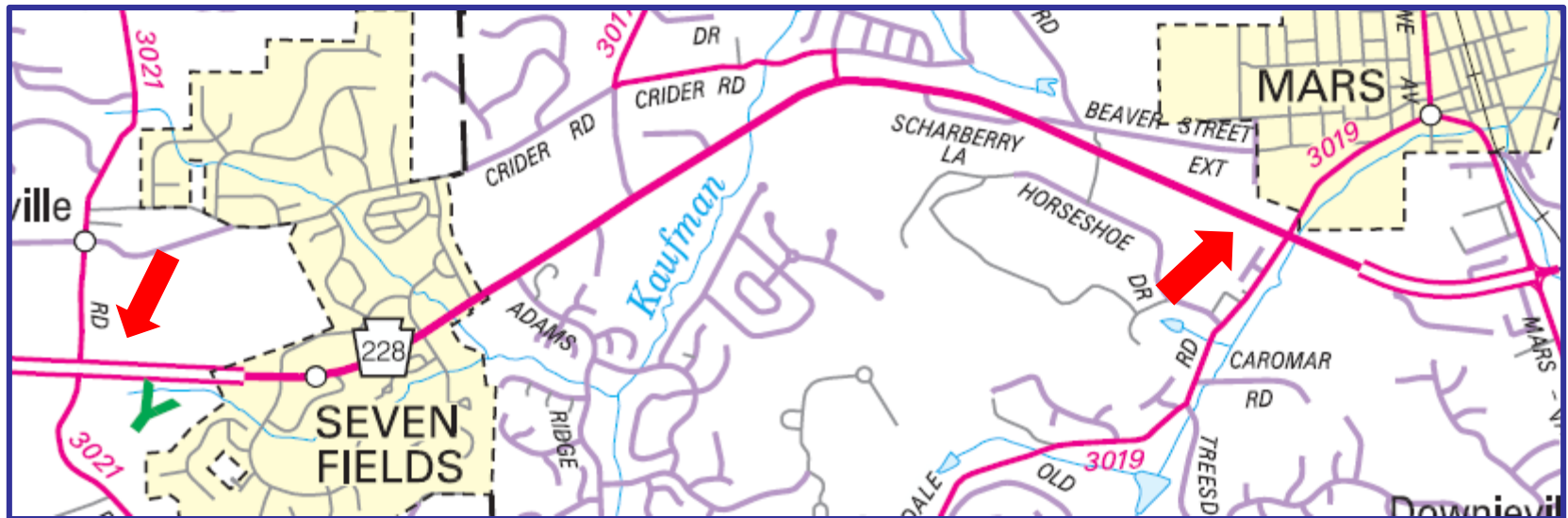
Karns Crossing Bridge

- Route 68
- Alternatives Study to evaluate replacement & rehabilitation options
- Butler & Summit Twps.
- Construction not funded
- Estimate: \$20M - \$40M



Mars Railroad Bridge West Expansion

- Route 228
- Widening, Lane additions, Intersection improvements
- Adams & Cranberry Twps.
- Construction not funded
- Estimate: \$50M to \$60M



SR 3015 Over Trib to Breakneck Creek (Callery Br. #2)

- SR 3015
- Bridge Replacement
- Callery Twp.
- Over Breakneck Creek
- Construction not funded
- Estimate: \$1M - \$2.5M



SR 3014 Callery Bridge

- SR 3014
- Bridge Replacement
- Callery Borough
- Over Breakneck Creek
- Construction not funded
- Estimate: \$1M - \$2.5M



Southwest of Euclid Bridge

- SR 138
- Bridge Replacement
- Clay Twp.
- Over Tributary to Muddy Creek
- Construction not funded
- Estimate: \$1M - \$2.5M



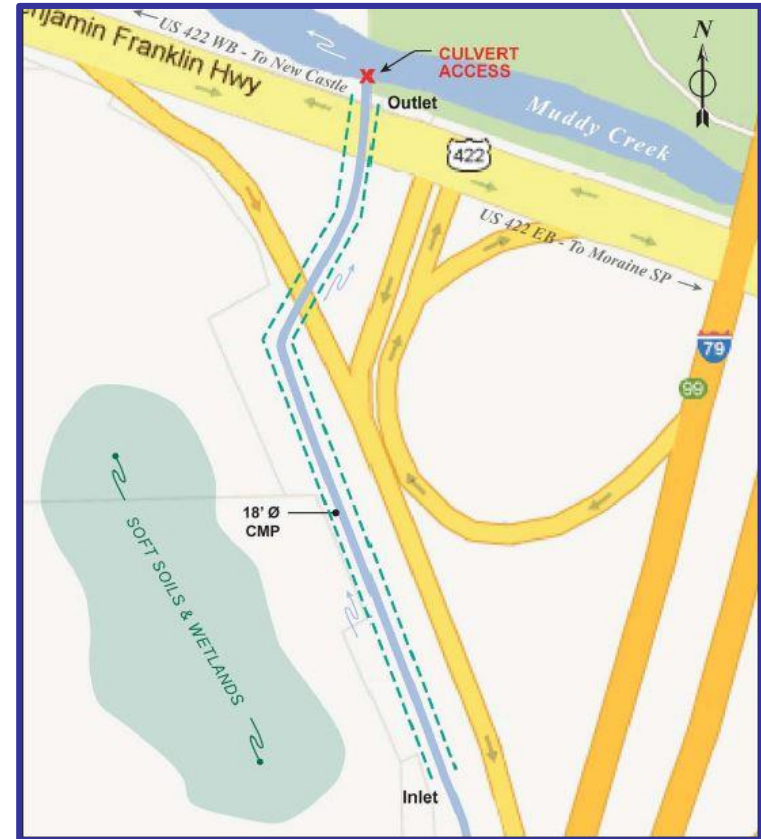
Rattigan Bridge #1

- SR 1021
- Bridge Replacement
- Donegal Twp.
- Over Buffalo Run
- Construction not funded
- Estimate: \$1M - \$2.5M



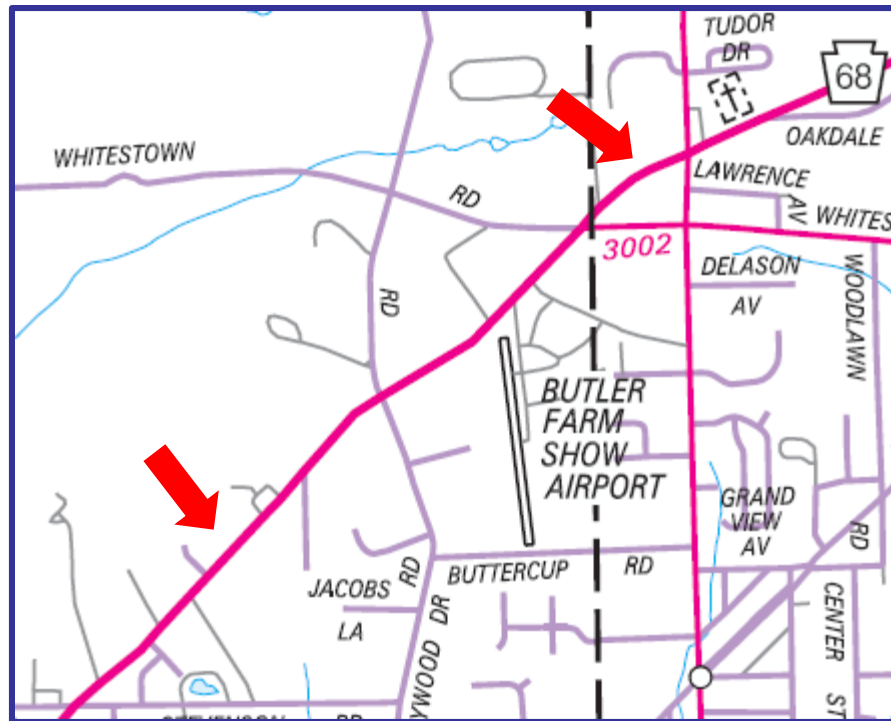
US 422 Shawood Pipe

- Route 422
- Culvert Replacement
- Muddy Creek Twp.
- Tributary to Muddy Creek
- Construction not funded
- Estimate: \$7.5M - \$10M



PA 68 Corridor Improvements

- Route 68 -Intersection Improvements
- Connoquenessing & Butler Twps.
- Construction Not Funded
- Estimate: \$2.5M - \$5M



Lardintown Run Bridge No. 2

- SR 2011
- Bridge Replacement
- Over Lardintown Run
- Clinton Twp.
- Detour
- Construction not funded
- Estimate: \$1M - \$2.5M



Prospect Bridge #3

- SR 3034
- Bridge Replacement
- Prospect Borough
- Over Tributary to Semiconon Run
- Construction not funded
- Estimate: \$500,000 - \$1M



MAINTENANCE

Brian N. Allen, P.E.

Assistant District Engineer for Maintenance

724-357-2809



[Back to Agenda](#)

2018 Butler County Maintenance

Contact Information

351 New Castle Road
Butler PA 16001

Phone Number: 724-284-8800

Fax Number: 724-284-1594



County Manager – Michael Mattis

Acting Assistant Manager – Chris Schneider

Assistant Manager – Bruce Hartman

Acting Assistant Manager – Chuck Kiley

Roadway Programs Coordinator – Chris Robinson

Acting Equipment Manager – Carl Hays

Adopt-A-Highway Coordinator – Kelsey Mulig

Butler County Winter

2017-2018 Butler County Winter Budget (personnel & operations)	\$4,708,000
Salt (5-year average in tons)	22,781
Anti-Skid (5-year average in tons)	9,739
Brine (5-year average in gallons)	246,208

Butler County Sectional Cycle Maintenance

Section 1 - Red

Activities being performed this summer: Patching, Pipe Repair/Installation, Sign Repair/Installation, Mowing, Crack Sealing, Department Force Bridge Replacement

Section 2 - Green

Activities being performed this summer: Seal Coat, Patching, Base Repair, Pipe Replacement/Installation, Sign Replacement/Repair, Crack Sealing, I-79 Paving (US 422 to County Line)

Section 3 - Blue

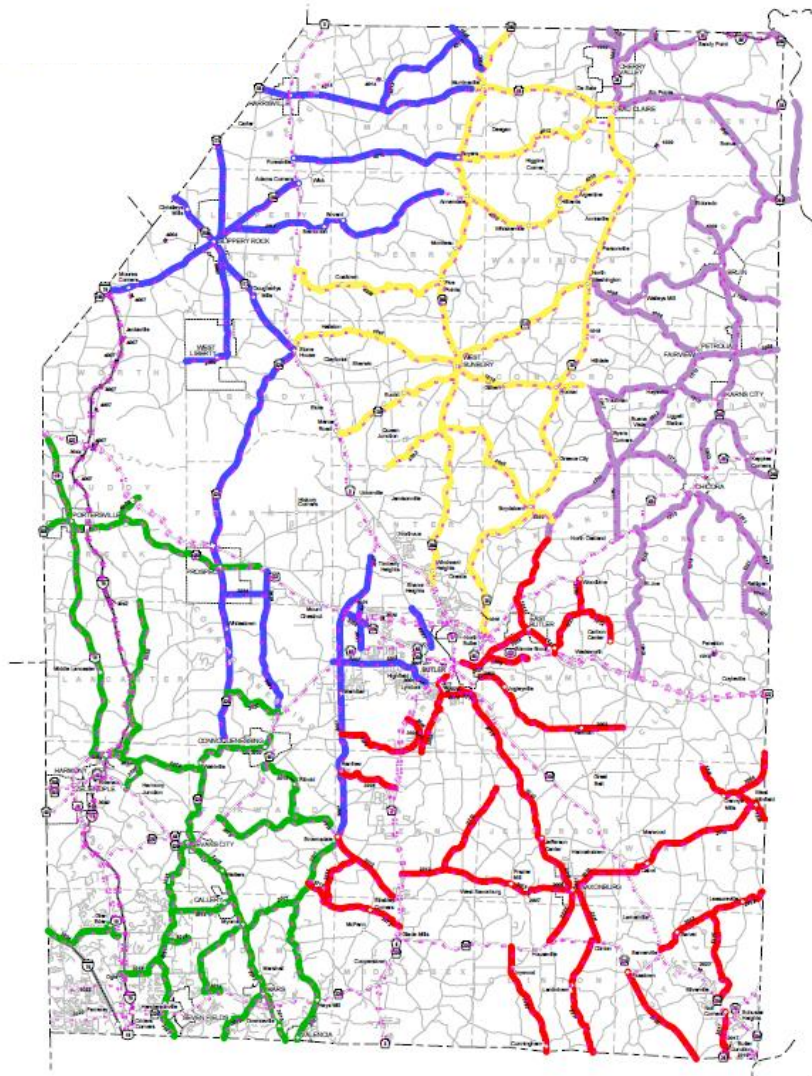
Activities being performed this summer: Shoulder Cutting, Patching, Pipe Repair/Installation, Sign Repair Installation, Crack Sealing

Section 4 – Yellow with Red

Activities being performed this summer: Patching, Pipe Installation/Repair, Crack Sealing, Sign Installation/Repair, Tail Ditching, Pipe Flushing, RT 58 Paving (RT 308 to RT 38)

Section 5 - Purple

Activities being performed this summer: Patching, Pipe Replacement, Sign Replacement/Repair, Crack Sealing



Butler County – Maintenance Activities

Pipe Replacement

2018 Planned: **15,821 feet**

2017 Completed: 16,770 feet



Butler County – Maintenance Activities

Ditch Cleaning

2018 Planned: **95,813 feet**
2017 Completed: 48,206 feet



Butler County – Maintenance Activities

Manual Patching



2018 Planned: 2,197 tons

2017 Completed: 1,862 tons

Butler County Maintenance Activities

Shoulder Cutting

2018 Planned: 2,333 acres
2017 Completed: 155 miles



Butler County Maintenance Activities



Seal Coat

2018 Planned: 417,900 gallons

2017 Completed: 468,165 gallons

Butler County Maintenance Activities

Crack Sealing



2018 Planned: 80 lane miles

2017 Completed: 57 lane miles

Butler County Bridge Replacement

Department Force Bridge Replacement 2017



State Route 1010
Hooker Road
Concord Twp.

➤ Butler County Upcoming Projects Department Force

Paving SR 3007

Butler County Maintenance Forces will be performing paving on SR 3007 from the intersection of Union Church Road to Brownsdale Road. We will be partnering with Rex Energy for the project.



Bridge Replacement – SR 2011 (Lardintown Road)

Butler County Maintenance Forces will be replacing the bridge on State Route 2011, Clinton Twp. The road will be closed during the duration and a detour utilized.



Butler County Agility Opportunities

Agility – Partnership between Butler County PENNDOT and one of the following organizations:

- Borough, Township or City
- Water, Sewer, Housing or Municipal Authority
- Councils of Government
- Public School Districts or Universities
- Charitable Hospitals
- Volunteer Fire Companies
- Volunteer Ambulance Companies



The agreed upon work between PENNDOT
and the Partner must be as close to or equal in value.

For questions, please call
Butler County's Agility Coordinator Chris Robinson @ 724-284-8800.

Innovation & Improvements



BUTLER VO-TECH,
JUDGE'S PICK



Keystone Area (Clarion)
Facebook Fan Favorite



Innovation & Improvement

ALL ABOUT

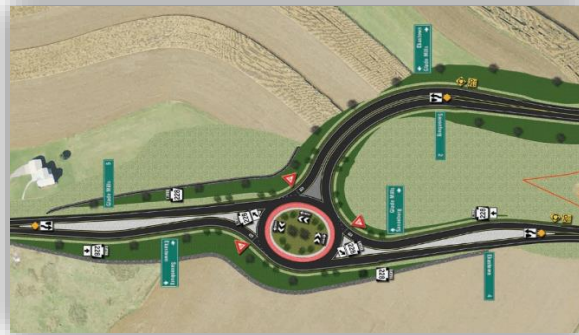
SAFETY

- Slower Speeds
- 90% Reduction in Fatal Crashes
- 75% Reduction in Injury Crashes
- 30-40% Reduction in Pedestrian Crashes
- 10% Reduction in Bicycle Crashes



CAPACITY

- Reduces Delays
- 30% Increase in Vehicle Accommodation
- Increased Traffic Flow
- Click [HERE](#) for Roundabout Video



Upcoming Programs

- **Rural Commercial Routes Program**
 - Low volume route improvements
 - Pavement treatments
 - Recycled asphalt
 - Flexible base
 - Warm mix asphalt with higher recycled asphalt percentage
- **Municipal Bridge Improvement Program**
 - Component of [Road MaP](#)
 - Bundling for cost savings
 - Partnering with local government agencies

Resources – Customer Care Center

www.penndot.gov



Would you like to report a concern on state-owned road conditions, construction projects, signs or signals, speed limits, or damage to personal property? Please click on the county involved in your concern in the menu below.

ATTENTION: If your concern is related to an urgent issue, and it is outside of business hours (8am-5pm), please refer to [Publication 22](#) to telephone the appropriate PennDOT County Office directly with your concern.

Please refrain from using derogatory language when submitting a concern.

Select County ▼

The Customer Care Center is best used with Internet Explorer version 6 or higher.

Click the link below for all Driver License and Motor Vehicle Registration concerns and issues.



[To Driver and Vehicle Services Site](#)

Do you have kudos to share for PennDOT operations or staff? Did you receive service for which you want to submit feedback? Please share the good news with us by emailing ra-penndotpress@pa.gov.

Resources - Alerts

Tom Wolf, Governor

Leslie S. Richards, Secretary of Transportation



Travel Info to Go

ALERTS Interstate 90 Eastbound at mile marker 145 is currently closed.



511PA CONNECT

TRAVEL CONDITIONS >

PERSONAL ALERTS >

511 MOBILE APP >

USING 511 >

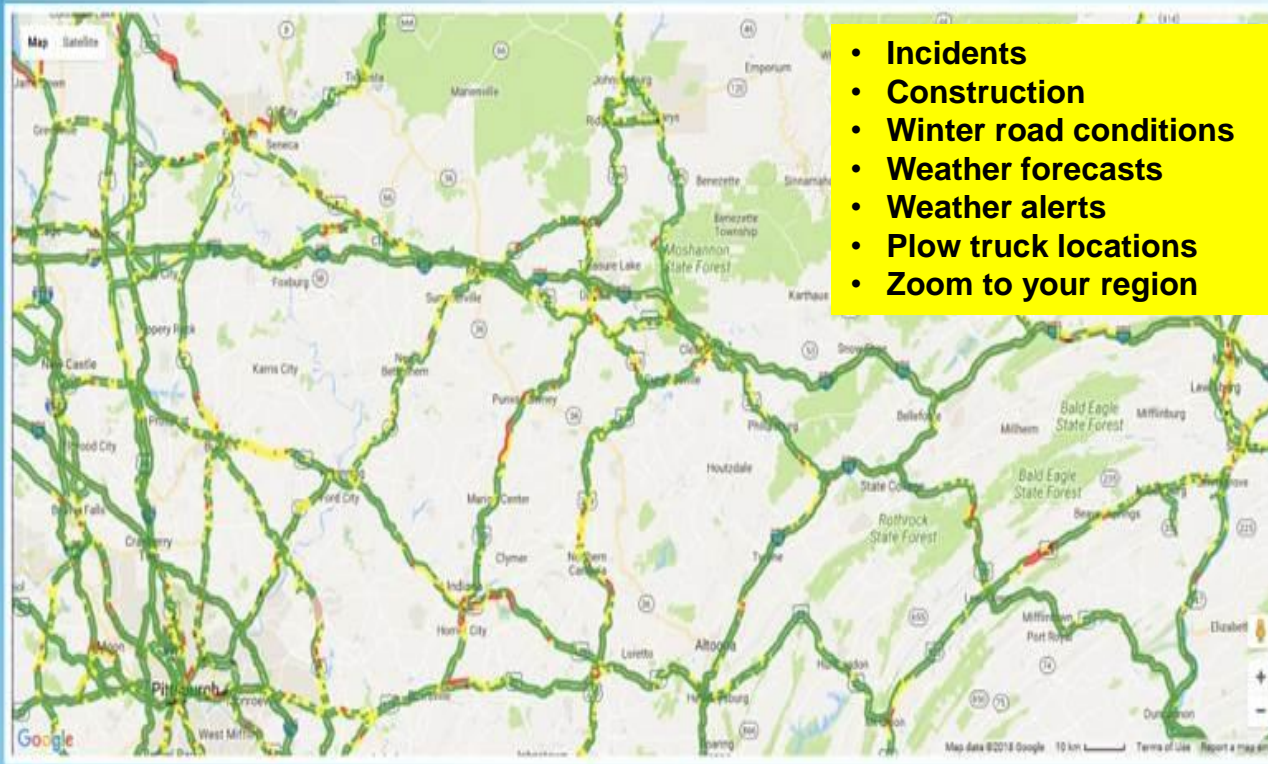
TRAVEL LINKS >

TRANSIT, BIKE, PED >

ZOOM TO:

Northwestern Region (Erie)

☐ Incidents ☐ Construction ☐ Weather Forecast ☐ Weather Alerts ☐ Weather Stations ☐ Special Events ☐ Cameras ☐ Rest Facilities ☒ Show Speed ☐ Winter Road Conditions ☐ Plow Trucks



Free Flowing Moderate Traffic Heavy Traffic Stop and Go Closed

Speed information provided by INRIX © 2014. All rights reserved by INRIX, Inc.



Download the
FREE 511PA
Smartphone app!
[Click to Learn More](#)

511PA now has a mobile application you can use for active PennDOT and Pa. Turnpike advisories. Customize your alerts by type, distance and frequency based on your location. Best of all, you don't need to touch or read your phone - just listen for the travel alerts while you focus on driving!



Resources – Customer Surveys



WINTER SURVEY

District 10 wants your input on our performance during the recent storm.

[Please give us your feedback](#) so that we can improve as needed.

CONSTRUCTION SURVEY

District 10 needs your feedback on projects that have been completed this year. Please [take a few minutes and give us your comments](#) about the listed projects, or other projects in your area.

www.penndot.gov

➡ **Regional Offices, D10**

➡ **Customer Service Surveys**

Winter Survey – live during the winter storm season.

Construction Survey – live between mid-November and the end of December.