

OFFICIAL BALLOT
NOVEMBER 8, 2022 FEDERAL GENERAL ELECTION
COUNTY OF BUTLER, COMMONWEALTH OF PENNSYLVANIA

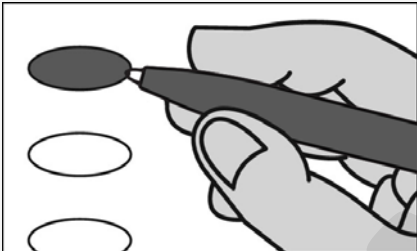
FAIRVIEW TWP
150

BOARD OF ELECTIONS

Julie A. Osche
Kimberly D. Meyer
Kevin E. Banzel

Instructions

Making Selections

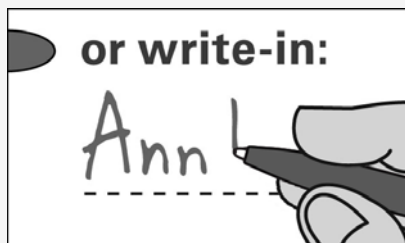


Fill in the oval to the left of the name of your choice. You must blacken the oval completely, and do not make any marks outside of the oval. You do not have to vote in every race.

Do not cross out or erase, or your vote may not count. If you make a mistake or a stray mark, ask for a new ballot from the poll workers.

WARNING: If you receive an absentee or mail-in ballot and return your voted ballot by the deadline you may not vote at your polling place on election day. If you are unable to return your voted absentee or mail-in ballot by the deadline, you may only vote a provisional ballot at your polling place on election day, unless you surrender your absentee or mail-in ballot and envelope to the judge of elections to be voided to vote by regular ballot.

Optional write-in



To add a candidate, fill in the oval to the left of "or write-in" and print the name clearly on the dotted line.

UNITED STATES SENATOR
Six Year Term
Vote for One

- JOHN FETTERMAN
DEMOCRATIC
- MEHMET OZ
REPUBLICAN
- ERIK GERHARDT
LIBERTARIAN
- RICHARD L WEISS
GREEN
- DANIEL WASSMER
KEYSTONE
- Write-in

REPRESENTATIVE IN
CONGRESS
16TH DISTRICT
Two Year Term
Vote for One

- DAN PASTORE
DEMOCRATIC
- MIKE KELLY
REPUBLICAN
- Write-in

REPRESENTATIVE IN THE
GENERAL ASSEMBLY
17TH DISTRICT
Two Year Term
Vote for One

- TIM BONNER
REPUBLICAN
- Write-in

GOVERNOR
Four Year Term
Vote for One

- JOSH SHAPIRO
GOVERNOR DEMOCRATIC
- AUSTIN DAVIS
LIEUTENANT GOVERNOR
- DOUGLAS V MASTRIANO
GOVERNOR REPUBLICAN
- CARRIE LEWIS
DELROSSO
LIEUTENANT GOVERNOR
- MATT HACKENBURG
GOVERNOR LIBERTARIAN
- TIM MCMASTER
LIEUTENANT GOVERNOR
- CHRISTINA DIGIULIO
GOVERNOR GREEN
- MICHAEL
BAGDES-CANNING
LIEUTENANT GOVERNOR
- JOE SOLOSKI
GOVERNOR KEYSTONE
- NICOLE SHULTZ
LIEUTENANT GOVERNOR
- Write-in